

ECE Professional Resource Centre (Strive Online)

User Guide



LOGIN

Content

About Strive and How to Connect with Us..... 3

Part 1: Introduction

What You'll Find in this Guide..... **4**

Before You Get Started..... **4**

Part 2: Getting Set Up

Accessing Strive Online Through the Website..... **5**

Registering for an Account..... **7**

Logging In to Your Account..... **9**

Part 3: Navigating Strive Online

Accessing Strive Online Through the Website..... **5**

Registering for an Account.....

Logging In to Your Account..... **7**

About Strive

Strive is a collaborative group of Child Care & Early Years Practitioners who support learning and development in order to enhance quality practice.

Since 2014, Strive has been meeting to discuss and consider how to enhance a collaborative approach to quality child care and professional learning across all early years and child care programs. Our community is interested in a process that supports **reflection** and **sustainable evolution** rather than a prescribed method to measure.

Vision

We are a community that works collaboratively to promote and build our professional capacity to provide high quality early years, school age, and family support programs and services.

Purpose

To identify & establish linkages within the Child Care and Early Years community that support and build upon the expertise of Early Years Practitioners and enhance the quality of the services they provide.

Objective

To provide continuous, accessible professional learning opportunities and resources for early years professionals as a means to learn through collaborative inquiry, and to reflect on practice.



@striveswo | www.striveswo.ca

Part 1 | Introduction

Thank you for being a member of the Strive Online, and for being a part of our early years community.

We created this guide to assist you with navigating the MyTurn platform to make locating Strive Online professional resources easy!

What's Covered in this Guide

This guide includes instructions with images that detail access and basic functions of the MyTurn software that houses Strive Online resources. It is designed to support your registration and login process on the MyTurn platform.

Advanced features and troubleshooting are NOT included in this guide. Please connect with the Resource Centre Team for further support.

Before You Get Started

1. Information Included in This Guide

At the time this guide was created, we used the most up-to-date information available. However, as updates are made to the MyTurn platform and the Strive website, the screenshots included

may look slightly different than what you see in on the website or MyTurn platform. Although the layout may look slightly different, the steps to register and login generally remain the same.

2. MyTurn on Different Devices

The screenshots and instructions included in this guide are from the MyTurn software and the Strive website accessed using a computer. There are differences when using MyTurn on the mobile devices.

When possible, we recommend using a computer instead of a mobile device. Some functionalities may be limited on mobile devices.

Contact Information

The Resource Centre Team is here to support you during operating hours ([please see website for current hours](#)).

BY EMAIL:

resourcecentre@striveswo.ca

BY PHONE:

519-434-3644 ext. 602.

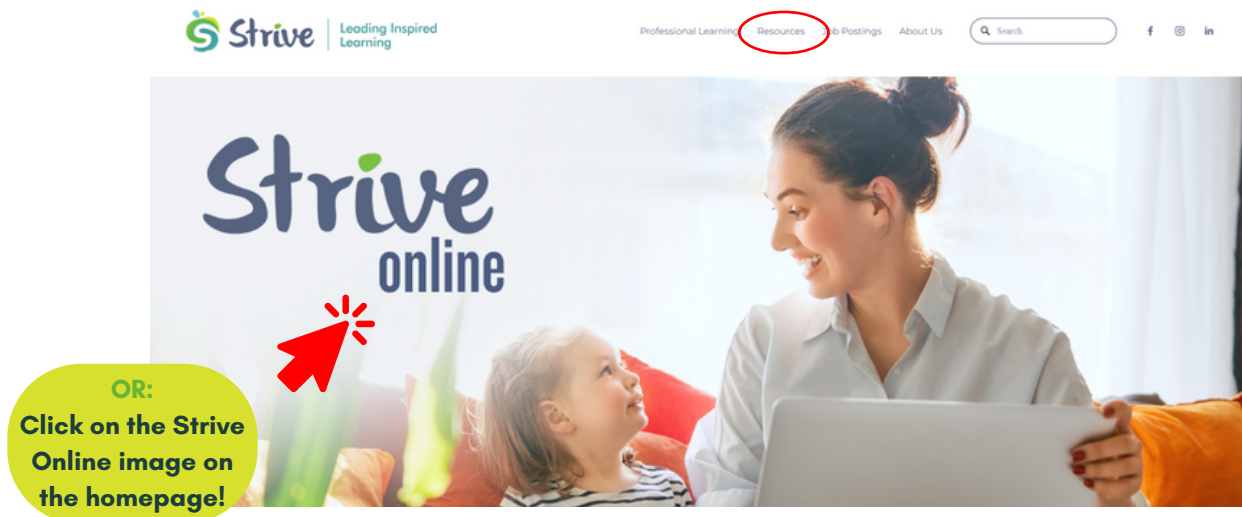
Part 2 | Getting Set Up

Accessing Strive Online Through the Strive Website

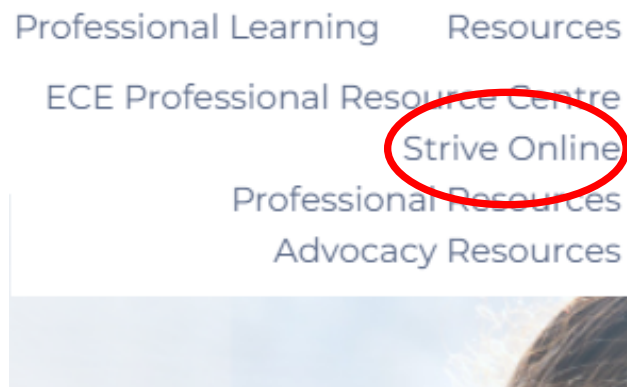
The ability to browse the inventory and your account login can all be found on the Strive website. The URL is: <https://striveswo.ca/strive-online/>.

To access the Strive Online from the home page, follow these steps:

1. Hover over "Resources" in the main menu.



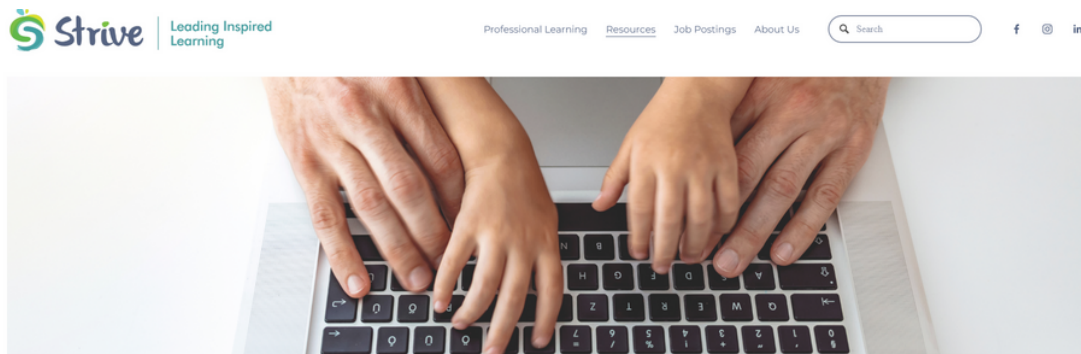
2. When the drop-down menu appears, click on "Strive Online".



Part 2 | Getting Set Up

Accessing Strive Online Through the Strive Website

3. The page should look like this!



Scroll down to reach the inventory. Click "Create Account" to register or click "Login" if you already have an account.

Resource Library

All Items 701 results

English

Create Account

Login

Search Within... Q

Per Page 15 View Grid Sort By Relevance

Availability

In stock now

Category

- Age Group (696)
 - Infant (0-18 months) (164)
 - Preschool (2-5 years) (403)
 - School Age (5-13 years) (257)
 - Toddler (18-24 months) (321)
- Areas of Interest (696)

2-Piece Sequencing

Check Availability

3D Shapes Dominoes

Due 13/09/2022

3 Piece Large Knob Transportation Puzzle

Check Availability



Part 2 | Getting Set Up

Registering for an Account

To register for a Strive Online account through the Strive Online page on our website, follow these steps:

1. Click on "Create Account" in the top right corner of the Resource Library screen.

Resource Library

The screenshot shows the Resource Library interface. At the top right, there is a navigation bar with a globe icon, the text "English", a "Create Account" button circled in red, and a "Log In" link. Below the navigation bar, there is a search bar with the text "Search Within..." and a magnifying glass icon. To the left of the search bar, there are filters for "Availability" (with a checkbox for "In stock now") and "Category" (with checkboxes for "Age Group (696)", "Infant (0-18 months) (164)", "Preschool (2-5 years) (403)", "School Age (5-13 years) (257)", and "Toddler (18-24 months) (321)"). The main content area displays three items: "2-Piece Sequencing", "3D Shapes Dominoes", and "3 Piece Large Knob Transportation Puzzle". Each item has a "Check Availability" button. The "3D Shapes Dominoes" item has a red "Due 13/09/2022" label. At the top right of the main content area, there are controls for "Per Page" (set to 15), "View" (set to Grid), and "Sort By" (set to Relevance).

2. When the registration screen opens, enter your information then click "Submit".

The screenshot shows the "Sign Up" registration form. The form is divided into two main sections: "Enter your personal details below:" and "Enter your account details below:". The "personal details" section includes fields for "First Name", "Last Name", "Organization", and "Email". The "account details" section includes fields for "Username", "Password", and "Re-type Your Password". To the right of these fields, there is an "Address" section with fields for "City", "Country" (set to "Canada"), "Province", "Postal Code", "Phone", and "Alt. Phone". Below the address fields, there is a "County" section with radio buttons for "London Professional", "Middlesex Professional", "Elgin Professional", "Professionals from Other Counties", "London Parent/Caregiver", "Middlesex Parent/Caregiver", "Elgin Parent/Caregiver", "Parent/Caregiver from Other Counties", and "Oxford Professional". At the bottom right of the form, there is a "Cancel" button and a "SUBMIT" button circled in red. Below the form, there is a dark blue bar with the text "ALREADY HAVE AN ACCOUNT?" and "FORGOT YOUR PASSWORD?". At the bottom right, there is a "Powered By" logo for "MY TURN".

Part 2 | Getting Set Up

Registering for an Account

3. If you have successfully submitted your account information, the membership screen will now open.

At this point, you have the option to upgrade your membership. Strive Online is the default membership type and is available for free. **If you only want access to Strive Online, you do not need to do anything here.**

If you would also like access to the physical resources available through the ECE Professional Resource Centre, you may select the "**Resource Centre & Strive Online**" membership type. The cost is \$35.00/year. For more information about the ECE Professional Resource Centre, and to browse the inventory before committing to a membership, **please visit our website.**

Select Membership

Loans
Reservations
Transactions

| | | | | | | | | | | | | | | | |
|---|--|--------------------------|--------|----------------------|---------|--|--------------------------|--------|----------------------|---------|---|--------------------------|--------|----------------------|--------|
| <ul style="list-style-type: none"> Personal Info Password Communication Current Membership <li style="background-color: #007bff; color: white; padding: 2px;">Membership Options Payment method Agreements | <div style="background-color: #333; color: white; padding: 5px; text-align: center; font-weight: bold;">Resource Centre & Strive Online</div> <p>This membership level will allow you to reserve and sign out physical items from the ECE Professional Resource Centre, including resource kits, toys, games, books, and more!</p> <p>In addition, you also have access to Strive Online virtual resources, including recorded live professional learning sessions, live session materials, ECEC professional supports, French-language resources, and more!</p> <p>This membership level is \$35/year.</p> <table style="width: 100%; border-collapse: collapse;"> <tr> <td style="width: 60%;">⌚ Duration:</td> <td>1 year</td> </tr> <tr> <td>💰 Cost:</td> <td>\$35.00</td> </tr> </table> <p style="text-align: center;"><input checked="" type="checkbox"/> Renew Automatically</p> <p style="text-align: center; background-color: #ccc; padding: 5px; width: 100%;">Pay \$35.00</p> | ⌚ Duration: | 1 year | 💰 Cost: | \$35.00 | <div style="background-color: #333; color: white; padding: 5px; text-align: center; font-weight: bold;">Resource Centre</div> <p>This membership level will allow you to reserve and sign out physical items from the ECE Professional Resource Centre, including resource kits, toys, games, books, and more!</p> <p>This membership level is \$35/year. This membership level allows you to reserve and check out physical resources. This membership level DOES NOT allow you to access Strive Online resources.</p> <table style="width: 100%; border-collapse: collapse;"> <tr> <td style="width: 60%;">⌚ Duration:</td> <td>1 year</td> </tr> <tr> <td>💰 Cost:</td> <td>\$35.00</td> </tr> </table> <p style="text-align: center;"><input checked="" type="checkbox"/> Renew Automatically</p> <p style="text-align: center; background-color: #ccc; padding: 5px; width: 100%;">Pay \$35.00</p> | ⌚ Duration: | 1 year | 💰 Cost: | \$35.00 | <div style="background-color: #333; color: white; padding: 5px; text-align: center; font-weight: bold;">Strive Online</div> <p>This membership level allows you to access any Strive Online virtual resources, including recorded live professional learning sessions, live session materials, ECEC professional supports, French-language resources, and more!</p> <p>This membership level is FREE. This membership level DOES NOT allow you to reserve and check out physical resources.</p> <table style="width: 100%; border-collapse: collapse;"> <tr> <td style="width: 60%;">⌚ Duration:</td> <td>1 year</td> </tr> <tr> <td>💰 Cost:</td> <td>\$0.00</td> </tr> </table> <p style="text-align: center;"><input checked="" type="checkbox"/> Renew Automatically</p> <p style="text-align: center; background-color: #ccc; padding: 5px; width: 100%;">✓</p> | ⌚ Duration: | 1 year | 💰 Cost: | \$0.00 |
| ⌚ Duration: | 1 year | | | | | | | | | | | | | | |
| 💰 Cost: | \$35.00 | | | | | | | | | | | | | | |
| ⌚ Duration: | 1 year | | | | | | | | | | | | | | |
| 💰 Cost: | \$35.00 | | | | | | | | | | | | | | |
| ⌚ Duration: | 1 year | | | | | | | | | | | | | | |
| 💰 Cost: | \$0.00 | | | | | | | | | | | | | | |

Part 2 | Getting Set Up

Logging In to Your Account

To access your account from the Strive Online page on our website, follow these steps:

1. Click on "Log In" in the top right corner of the Resource Library screen.

Resource Library

All Items 701 results

English | Create Account | **Log In**

Search Within... x Q

Per Page 15 | View Grid | Sort By Relevance

Availability

- In stock now

Category

- Age Group (696)
 - Infant (0-18 months) (164)
 - Preschool (2-5 years) (403)
 - School Age (5-13 years) (257)
 - Toddler (18-24 months) (321)

2-Piece Sequencing

3D Shapes Dominoes

3 Piece Large Knob Transportation Puzzle

2. When the login screen opens, enter your account information.

Sign In

Username or Email Address

Password

LOGIN Remember [Forgot Password?](#)

CREATE AN ACCOUNT

BACK

< Enter your username **OR** email address

< Enter your password

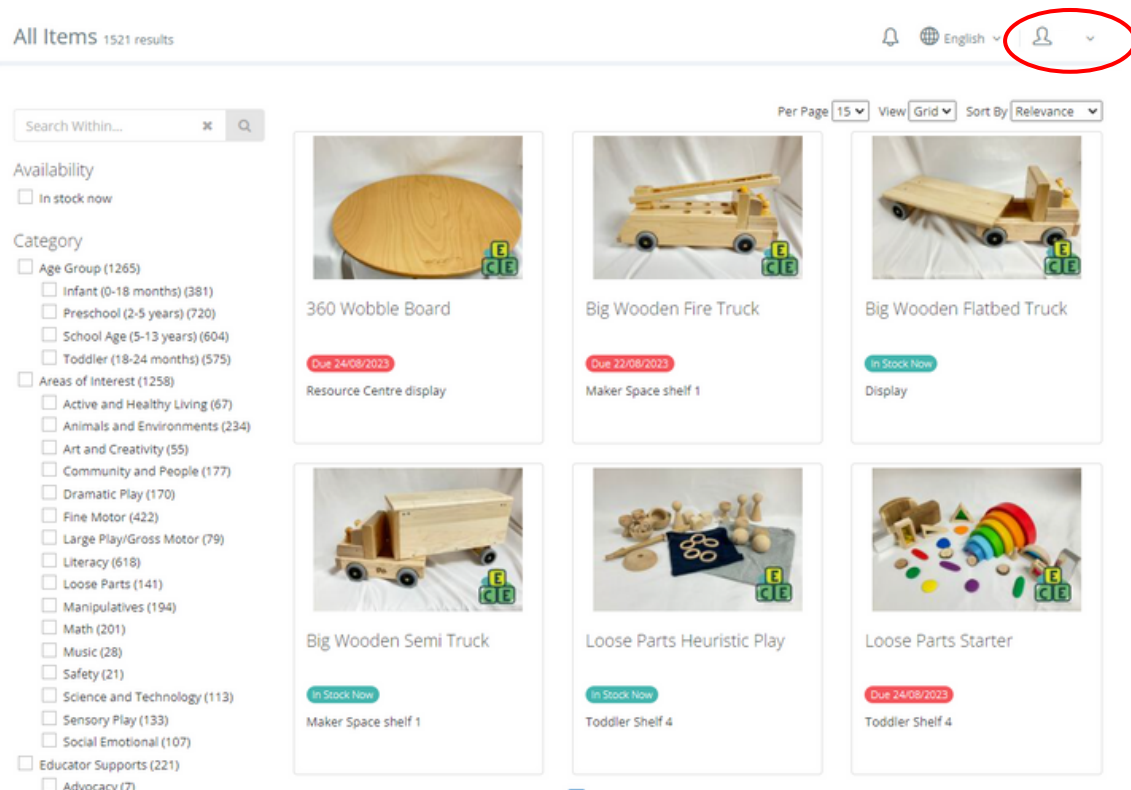
< Click **LOGIN**

Strive Online resources will NOT be visible until you log in!

Part 3 | Navigating Strive Online

Locating Strive Online Content

1. If you are successfully logged in, your name will appear in the upper right corner beside the person icon.



2. In the left menu, select "Online Learning", which will be located towards the bottom of the list. It will now display Strive Online inventory.

- Online Learning (85)**
- Printable Resources (11)
- Session Materials (27)
- Session Recording (29)
- Videos (46)
- Webinars (6)

You can further sort the inventory by selecting the type of resource you are looking for (ex. printable resources, session recording, etc.), by selecting the other available categories (ex. educator supports for advocacy), or by using the search bar at the top of the left-side menu.

If you **unselect** "Online Learning", the physical resources from the ECE Professional Resource Centre will also display. Just **reselect "Online Learning" to see ONLY Strive Online resources.**